

# HVAC Tapes Catalog



UL Listed Cloth and Foil Tapes • Cold Weather Tapes • Plain Foil Tapes  
Insulation Tapes • Mastic Tapes • Duct Tapes • Line Set Tape • Spray Adhesive  
Electrical and Plumbing Tape • Packaging Tapes • Masking Tapes and More

# UL Listed Tapes

Leaky ducts can account for up to 30% of heating and cooling costs. In fact, duct leakage of only 20% of air flow can reduce a systems' efficiency by up to 50%! Ensuring energy efficiency doesn't have to be difficult, time consuming, or expensive. Simply using a Nashua UL 181 listed tape to seal critical areas can save time, energy, and money! National energy and building standards actually mandate that tapes used to seal ducts be "listed and labeled" in accordance with UL 181!



**Look for the Mark...** The UL® mark printed on a tape is a sign of safety, performance, and quality. Underwriters Laboratories (UL) is a global independent science safety company that develops tests and standards, evaluates products for safety and performance, and certifies and audits the products that carry their mark. Nashua Tape partners with UL to ensure our tapes are among the highest quality, highest performing products available to the HVAC market.

## FIBERGLASS & FLEXIBLE DUCT NASHUA 324A Premium Cold Weather Foil Tape



BONDS IN EXTREME COLD/HEAT/HUMIDITY  
EXCELLENT TACK AND ADHESION  
RESISTS MOLD AND MILDEW GROWTH

SEAM, SEAL, AND JOIN FIBERGLASS DUCT BOARD AND SHEET METAL DUCT. SEALS JOINTS AND CONNECTIONS ON CLASS 1 FLEXIBLE DUCT.

Material	Printed Alu Foil / Acrylic / Kraft	
Foil Thickness	2.1 mil	0.053 mm
Thickness (w/o Lnr)	4.8 mil	0.124 mm
Adhesion to Steel	68 oz/in	7.44 N/cm
Tensile Strength	28 lb/in	49.04 N/cm
Operating Temp	-25 to 325 °F	-32 to 163 °C
Std Sizes	2.5in x 60Yd, 72mm x 55M	

## FLEXIBLE DUCT - CALIFORNIA NASHUA 558CA 14 mil Premium CEC Duct Tape



EXCEPTIONAL LONG-TERM ADHESION  
HIGH STRENGTH AND DURABILITY  
APPROVED FOR USE IN CALIFORNIA

SEAM, SEAL, AND JOIN CLASS 1 FLEXIBLE DUCT. BUNDLING, GENERAL REPAIRS, AND MAINTENANCE USES.

Material	Prt PE Coated Cloth / Rubber	
Thickness	14.0 mil	0.356 mm
Adhesion to Steel	40 oz/in	4.38 N/cm
Tensile Strength	50 lb/in	87.56 N/cm
Operating Temp	40 to 200 °F	4 to 93 °C
Colors	Metallic	
Std Sizes	48mm x 55M	

## FLEXIBLE & SHEET METAL DUCT NASHUA 367-17 Foilmastic® Butyl Sealing Tape



PERMANENT AIR AND WATER-TIGHT SEALS  
REPOSITIONABLE FOR EASY INSTALLATION  
SEALS UP TO 10" W.G. PRESSURE

SEAM, SEAL, AND JOIN CLASS 1 FLEXIBLE DUCT. SEALS RIGID SHEET METAL DUCT JOINTS INCLUDING SLIPS & DRIVES.

Material	Prt Alu Foil / Butyl Rubber / LDPE	
Foil Thickness	2.0 mil	0.051 mm
Thickness (w/o Lnr)	17.0 mil	0.432 mm
Adhesion to Steel	90 oz/in	9.85 N/cm
Tensile Strength	23 lb/in	40.28 N/cm
Operating Temp	-20 to 200 °F	-29 to 93 °C
Std Sizes	2in, 3in x 33.3 Yd	

## FLEX DUCT/BUBBLE INSULATION 555 FLEXFIX® Contractor-Grade Film Tape



TOUGH, CONFORMABLE, AND DURABLE  
AGGRESSIVE, HIGH TACK BOND  
SOLVENT-FREE, LOW-ODOR ADHESIVE

SEAM, SEAL, AND JOIN CLASS 1 FLEXIBLE DUCT. EXCEPTIONAL BOND TO SEAL REFLECTIVE AND BUBBLE INSULATION.

Material	Printed OPP Film / Acrylic	
Thickness	3.1 mil	0.079 mm
Adhesion to Steel	45 oz/in	4.92 N/cm
Tensile Strength	34 lb/in	59.54 N/cm
Operating Temp	-40 to 212 °F	-40 to 100 °C
Colors	Metallic, Black	
Std Sizes	48mm, 72mm x 110M	

## FLEXIBLE DUCT NASHUA 557 14 mil Premium Duct Tape



EXCEPTIONAL BOND TO SURFACES  
HIGH STRENGTH AND DURABILITY  
CONFORMABLE AND EASY TO USE

SEAM, SEAL, AND JOIN CLASS 1 FLEXIBLE DUCT. BUNDLING, GENERAL REPAIRS, AND MAINTENANCE USES.

Material	Printed PE Coated Cloth / Rubber	
Thickness	14.0 mil	0.356 mm
Adhesion to Steel	45 oz/in	4.92 N/cm
Tensile Strength	29 lb/in	50.79 N/cm
Operating Temp	40 to 200 °F	4 to 93 °C
Colors	Silver, Black, Metallic	
Std Sizes	48mm, 72mm x 55M	





# Know the Code

The current International Code Council standards (IRC & IMC), which are updated every three years, specifically require the use of tapes “listed” and “labeled” in accordance with 181A-P for Fiberglass Duct Board and 181B-FX for Flexible Duct installations. UL has tested and regularly audits our Nashua UL-Listed tapes to ensure consistent compliance with the performance and safety standards set forth by the code.

Below is a summary of the physical standards, including size requirements and proper markings, outlined in the 181A-P & 181B-FX codes to help you identify the correct product for your application.

## Know The Codes

### UL 181A Code References


Tapes and mastics used to seal fibrous glass ductwork shall be listed and labeled in accordance with UL 181A and shall be marked “181 A-P” for pressure-sensitive tape, “181 A-M” for mastic or “181 A-H” for heat-sensitive tape.  
2018 International Mechanical Code (Section 603.9)

For Factory Made Rigid Ducts or Air Connectors  
UL 181A-P - 3rd Edition (Section 1.1)

Must use an aluminum tape with a minimum width of 2.5”.  
UL 181A-P - 3rd Edition (Section 6.1)

Tape must be marked with Manufacturer’s Name and Model.  
UL 181A-P - 3rd Edition (Section 15.1)

Tape must be marked with “181A-P”.  
UL 181A-P - 3rd Edition (Section 15.1)

Tape must be marked with  certification mark.  
UL 181A-P - 3rd Edition (Section 15.1)

### UL 181A-P Tapes

Nashua 339 Cold Weather

### UL 181B Code References


Tapes and mastics used to seal metallic and flexible air ducts and flexible air connectors shall comply with UL 181B and shall be marked “181 B-FX” for pressure-sensitive tape or “181 B-M” for mastic.  
2018 International Mechanical Code (Section 603.9)

For Factory Made Flexible Air Ducts or Air Connectors  
UL 181B-FX - 2nd Edition (Section 1.1)

Tapes must have a minimum width of 1 7/8”.  
UL 181B-FX - 2nd Edition (Section 7.1)

Tape must be marked with Manufacturer’s Name and Model.  
UL 181B-FX - 2nd Edition (Section 14.1)

Tape must be marked with “181B-FX”.  
UL 181B-FX - 2nd Edition (Section 14.1)

Tape must be marked with  certification mark.  
UL 181B-FX - 2nd Edition (Section 14.1)

### UL 181B-FX Tapes

Nashua 324A Cold Weather      Nashua 557  
Nashua 367-17 Foilmastic      Nashua 558CA CEC  
555 FlexFix

**RIGID SHEET METAL DUCTS** - Currently there is no UL requirement for use of tape on rigid sheet metal ducts. Both plain or UL marked foil tapes are acceptable. The following Nashua tapes have a proven track record of providing air-tight seals: 324A, 330X, 322, 327 and 367-17. Nashua 367-17 has been independently verified by the SMACNA Testing and Research Institute for performance on rigid sheet metal ducts up to 10” w.g. pressure class.

# Foil Tapes

Nashua offers foil tapes for virtually every HVAC application including flexible duct, fiberglass duct, and rigid sheet metal duct. Our plain foil tapes include either synthetic rubber or acrylic adhesives to perform in a broad range of temperature and humidity conditions.



UL 181A-P & UL 181B-FX LISTED

## NASHUA 324A Premium Cold Weather Foil



BONDS IN EXTREME COLD/HEAT/HUMIDITY  
EXCELLENT TACK AND ADHESION  
RESISTS MOLD AND MILDEW GROWTH  
SEAM, SEAL, AND JOIN FIBERGLASS DUCT BOARD AND SHEET METAL DUCT. SEALS JOINTS AND CONNECTIONS ON CLASS 1 FLEXIBLE DUCT.

Material	Printed Alu Foil / Acrylic / Kraft	
Foil Thickness	2.1 mil	0.053 mm
Thickness (w/o Lnr)	4.8 mil	0.124 mm
Adhesion to Steel	68 oz/in	7.44 N/cm
Tensile Strength	28 lb/in	49.04 N/cm
Operating Temp	-25 to 325 °F	-32 to 163 °C
Std Sizes	2.5in x 60Yd, 72mm x 55M	



## NASHUA 322 Multi-Purpose Foil



THICK 2 MIL FOIL FACER  
CONFORMABLE AND TOUGH  
EXCELLENT TACK AND ADHESION  
LOW VOC - CAN CONTRIBUTE TO LEED®  
SEAL DUCT WORK FOR HVAC SYSTEMS. INSULATION SEAMING AND PATCHING. GENERAL REPAIRS AND MAINTENANCE.

Material	Alu Foil / Synthetic Rubber / Kraft	
Foil Thickness	2.0 mil	0.051 mm
Thickness (w/o Lnr)	5.0 mil	0.127 mm
Adhesion to Steel	130 oz/in	14.22 N/cm
Tensile	15 lb/in	26.27 N/cm
Operating Temp	40 to 200 °F	4 to 93 °C
Std Sizes	48mm, 72mm x 46M	



## NASHUA 330X Premium Extreme Weather Foil



PERFORMS IN EXTREME COLD AND HEAT  
CONFORMABLE AND TOUGH  
LOW VOC - CAN CONTRIBUTE TO LEED®  
SEAL DUCT WORK FOR HVAC SYSTEMS. INSULATION SEAMING AND PATCHING. GENERAL REPAIRS AND MAINTENANCE.

Material	Alu Foil / Acrylic / Kraft	
Foil Thickness	1.75 mil	0.044 mm
Thickness (w/o Lnr)	3.5 mil	0.089 mm
Adhesion to Steel	55 oz/in	6.02 N/cm
Tensile	14 lb/in	24.52 N/cm
Operating Temp	-35 to 260 °F	-37 to 127 °C
Std Sizes	48mm, 72mm x 46M	

## NASHUA 230X Utility Extreme Weather Foil



PERFORMS IN EXTREME COLD AND HEAT  
CONFORMABLE FOIL FACER  
EASY TO USE  
INSULATION SEAMING AND PATCHING. NON-CRITICAL DUCT SEALING. GENERAL REPAIRS AND MAINTENANCE USES.

Material	Alu Foil / Acrylic / Kraft	
Foil Thickness	1.5 mil	0.038 mm
Thickness (w/o Lnr)	3.0 mil	0.076 mm
Adhesion to Steel	45 oz/in	4.92 N/cm
Tensile	11 lb/in	19.26 N/cm
Operating Temp	-35 to 260 °F	-37 to 127 °C
Std Sizes	48mm, 72mm x 46M	

## POLYKEN 335FT High Temperature Foil



RESISTS UV, MOLD, AND MOISTURE  
EXTREME HIGH TEMP USES UP TO 500 °F  
EXCELLENT QUICK STICK  
SEALS SEAMS AND CLOSURES IN HIGH HEAT FLUE INSTALLATIONS. HIGH EFFICIENCY FURNACE-CERTIFIED PLASTIC VENT PIPES. HEAT SHIELDING AND WELDING.

Material	Alu Foil / Acrylic / Kraft	
Foil Thickness	1.75 mil	0.044 mm
Thickness (w/o Lnr)	3.8 mil	0.097 mm
Adhesion to Steel	35 oz/in	3.83 N/cm
Tensile	14 lb/in	24.52 N/cm
Operating Temp	-50 to 500 °F	-46 to 260 °C
Std Sizes	48mm, 72mm x 46M	



# Foil Mastic Tapes

Nashua mastic tapes provide permanent air and water-tight bonds to sheet metal, flex duct, galvanized metal, and more courtesy of our premium blended butyl rubber adhesives.



## UL 181B-FX LISTED NASHUA 367-17 Foilmastic Butyl Sealing Tape



PERMANENT AIR AND WATER-TIGHT SEALS  
REPOSITIONABLE FOR EASY INSTALLATION  
SEALS UP TO 10" W.G. PRESSURE

SEAM, SEAL, AND JOIN CLASS 1 FLEXIBLE  
DUCT. SEALS RIGID SHEET METAL DUCT  
JOINTS INCLUDING SLIPS & DRIVES.

Material	Prt Alu Foil / Butyl Rubber / LDPE	
Foil Thickness	2.0 mil	0.051 mm
Thickness (w/o Lnr)	17.0 mil	0.432 mm
Adhesion to Steel	90 oz/in	9.85 N/cm
Tensile Strength	23 lb/in	40.28 N/cm
Operating Temp	-20 to 200 °F	-28 to 93 °C
Std Sizes	2in, 3in x 33.3 Yd	

## NASHUA 327 Butyl-Mastic Sealing



UL 723 CLASSIFIED  
FOR SURFACE BURNING  
CHARACTERISTICS



INSTANT AIR AND WATER-TIGHT BOND  
THICK BUTYL ADHESIVE FILLS GAPS  
PERMANENT SEALS TO MANY SURFACES

DUCT JOINT SEALING. SHEET METAL  
REPAIRS FOR TRAILERS, OUTDOOR  
STRUCTURES, ROOFING, GUTTERS, ETC.  
INDOOR/OUTDOOR USES.

Material	Prt Alu Foil / Butyl Rubber / LDPE	
Foil Thickness	2.0 mil	0.051 mm
Thickness (w/o Lnr)	17.0 mil	0.432 mm
Adhesion to Steel	200 oz/in	21.88 N/cm
Tensile	20 lb/in	35.03 N/cm
Operating Temp	40 to 200 °F	4 to 93 °C
Std Sizes	48mm, 72mm x 31 M	

## NEED TAPES FOR AISLE/FLOOR MARKING, COLOR CODING, OR SAFE DISTANCING?



Nashua is here to help! We offer multiple products to help you offer the safest work and customer environment possible! Contact your sales rep today to learn more!

# Insulation Tapes

Nashua Tape's HVAC offering includes a variety of low permeability foil and foil-laminate tapes designed for sealing a variety of insulation jacketing materials and cladding.



## NASHUA FSK Foil-Scrim-Kraft Insulation



CONFORMABLE, TOUGH, TEAR-RESISTANT  
EXCELLENT TACK AND ADHESION  
LOW VOC - CAN CONTRIBUTE TO LEED®

SEAL AND PATCH FSK-FACED DUCT  
BOARDS AND INSULATION MATERIALS.  
GENERAL REPAIRS AND MAINTENANCE.

Material	Foil/Scrim/Kraft Laminate / Synthetic Rubber / Kraft	
Thickness (w/o Lnr)	9.25 mil	0.235 mm
Adhesion to Steel	70 oz/in	7.66 N/cm
Tensile	30 lb/in	52.54 N/cm
Operating Temp	40 to 200 °F	4 to 93 °C
Std Sizes	72mm x 46M	

## NASHUA 438 Extreme Weather FSK



PERFORMS IN EXTREME COLD AND HEAT  
CONFORMABLE, TOUGH, TEAR-RESISTANT  
LOW VOC - CAN CONTRIBUTE TO LEED®

SEAL AND PATCH FSK-FACED DUCT BOARD  
AND INSULATION MATERIALS IN EXTREME  
TEMPERATURES OR HIGH HUMIDITY.

Material	Foil/Scrim/Kraft Laminate / Acrylic / Kraft	
Thickness (w/o Lnr)	9.5 mil	0.241 mm
Adhesion to Steel	75 oz/in	8.21 N/cm
Tensile	33 lb/in	57.79 N/cm
Operating Temp	-35 to 260 °F	-37 to 127 °C
Std Sizes	72mm x 46M, 4in x 50Yd	

## NASHUA ASJ ASJ All-Service Jacketing



PERFORMS IN EXTREME COLD AND HEAT  
CONFORMABLE, TOUGH, TEAR-RESISTANT  
EXCELLENT TACK AND ADHESION

SEAL AND PATCH ASJ-FACED INDUSTRIAL  
INSULATION JACKETING MATERIALS.  
GENERAL REPAIRS AND MAINTENANCE.

Material	Kraft/Scrim/Foil Laminate / Acrylic / Kraft	
Thickness (w/o Lnr)	11.0 mil	0.279 mm
Adhesion to Steel	50 oz/in	5.47 N/cm
Tensile	45 lb/in	78.81 N/cm
Operating Temp	-35 to 260 °F	-37 to 127 °C
Colors	White	
Std Sizes	72mm x 46M	

## POLYKEN 822 Embossed PVC Jacketing Tape



INSTANT AIR AND WATER-TIGHT BOND  
THICK BUTYL ADHESIVE FILLS GAPS  
PERMANENT SEALS TO MANY SURFACES

DUCT JOINT SEALING. SHEET METAL  
REPAIRS FOR TRAILERS, ROOFING,  
GUTTERS, ETC. INDOOR/OUTDOOR USES.

Material	Embossed PVC Film / Acrylic / Kraft	
Thickness (w/o Lnr)	4.6 mil	0.117 mm
Adhesion to Steel	35 oz/in	3.83 N/cm
Tensile	7 lb/in	2.26 N/cm
Operating Temp	-40 to 225 °F	-40 to 127 °C
Colors	White	
Std Sizes	3in x 50Yd	

## BUBBLE/REFLECTIVE 555 FLEXFIX Contractor-Grade Film Tape



TOUGH, CONFORMABLE, AND DURABLE  
AGGRESSIVE, HIGH TACK BOND  
SOLVENT-FREE, LOW-ODOR ADHESIVE

SEAM, SEAL, AND JOIN CLASS 1 FLEXIBLE  
DUCT. EXCEPTIONAL BOND TO SEAL  
REFLECTIVE AND BUBBLE INSULATION.

Material	Printed OPP Film / Acrylic	
Thickness	3.1 mil	0.079 mm
Adhesion to Steel	45 oz/in	4.92 N/cm
Tensile Strength	34 lb/in	59.54 N/cm
Operating Temp	-40 to 212 °F	-40 to 100 °C
Colors	Metallic, Black	
Std Sizes	48 mm, 72mm x 110M	

## POLYKEN 358WMP ASJ-WMP Insulation Jacketing



HIGH STRENGTH LAMINATE BACKING  
EXCELLENT AIR AND MOISTURE BARRIER  
SUPER HIGH TACK, AGGRESSIVE BOND

VAPOR BARRIER SEAL FOR ASJ-WMP FACED  
INDUSTRIAL INSULATION AND THERMAL  
JACKETING. SEALING AND REPAIR USES.

Material	PP Film/Scrim/Foil Laminate / Acrylic / Kraft	
Thickness (w/o Lnr)	8.8 mil	0.224 mm
Adhesion to Steel	50 oz/in	5.47 N/cm
Tensile	45 lb/in	78.81 N/cm
Operating Temp	-35 to 260 °F	-37 to 127 °C
Colors	White	
Std Sizes	72mm x 46M	



# Cooler Repair Tape

## NASHUA 314CRT

Foil Laminate - Cooler Repair



LAMINATE BACKING RESISTS PUNCTURE  
EXCELLENT TACK AND ADHESION  
PERFORMS WELL IN COLD/HIGH MOISTURE

SEALS SEAMS, CORNERS, AND CRACKS  
AGAINST AIR LEAKAGE IN FREEZER UNITS,  
TRAILERS, AND WALK-IN COOLERS.

Material	Foil Laminate / Acrylic / Kraft	
Thickness (w/o Lnr)	10.2 mil	0.259 mm
Adhesion to Steel	100 oz/in	10.94 N/cm
Tensile	70 lb/in	122.59 N/cm
Operating Temp	-30 to 270 °F	-34 to 132 °C
Colors	Metallic Silver, White	
Std Sizes	4in x 15Yd	



# Line Set Tape

## 444

Line Set Tape



EXCELLENT ADHESION  
RESISTS FLAGGING OR LIFTING  
UV AND WEATHER RESISTANT  
HAND-TEARABLE AND EASY TO USE

WRAPPING AND PROTECTING OUTDOOR  
LINE SETS FOR HEATING, COOLING, AND  
REFRIGERATION SYSTEMS.

Material	OPP Film / Acrylic	
Thickness (w/o Lnr)	3.0 mil	0.432 mm
Adhesion to Steel	45 oz/in	4.92 N/cm
Tensile	32 lb/in	56.04 N/cm
Operating Temp	-40 to 212 °F	-44 to 100 °C
Colors	White, Black, Printed Black	
Std Sizes	48mm x 55M	



# Cloth Duct Tapes

The Nashua brand is highly recognized by contractors and professionals across multiple industries as the premium source for exceptional, high performance duct tapes. Nashua duct tapes have been engineered to provide the right balance of adhesion, tensile, and shear strength to meet rigorous customer and industry performance requirements for HVAC, plumbing, construction, abatement, maintenance, and more.

UL 181B-FX LISTED

## NASHUA 557

14 mil Premium Duct Tape



EXCEPTIONAL BOND TO SURFACES  
HIGH STRENGTH AND DURABILITY  
CONFORMABLE AND EASY TO USE

SEAM, SEAL, AND JOIN CLASS 1 FLEXIBLE  
DUCT. BUNDLING, GENERAL REPAIRS AND  
MAINTENANCE USES.

Material	Printed PE Coated Cloth / Rubber	
Thickness	14.0 mil	0.356 mm
Adhesion to Steel	45 oz/in	4.92 N/cm
Tensile Strength	29 lb/in	50.79 N/cm
Operating Temp	40 to 200 °F	4 to 93 °C
Colors	Silver, Black, Metallic	
Std Sizes	48mm, 72mm x 55M	

UL 181B-FX LISTED, CEC

## NASHUA 558CA

14 mil Premium CEC Duct Tape



EXCEPTIONAL LONG-TERM ADHESION  
HIGH STRENGTH AND DURABILITY  
APPROVED FOR USE IN CALIFORNIA

SEAM, SEAL, AND JOIN CLASS 1 FLEXIBLE  
DUCT. BUNDLING, GENERAL REPAIRS AND  
MAINTENANCE USES.

Material	Printed PE Coated Cloth / Rubber	
Thickness	14.0 mil	0.356 mm
Adhesion to Steel	40 oz/in	4.38 N/cm
Tensile Strength	50 lb/in	87.56 N/cm
Operating Temp	40 to 200 °F	4 to 93 °C
Colors	Metallic	
Std Sizes	48mm x 55M	

## NASHUA 307

7 mil Utility Grade



HIGH ADHESION RUBBER ADHESIVE  
CRISP, STRAIGHT TEAR BY HAND  
RESISTS TWISTING AND CURLING

GENERAL PURPOSE BUNDLING,  
PACKAGING, SEAMING, AND REPAIRS.  
PLUMBING USES.

Material	PE Coated Cloth / Natural Rubber	
Thickness	7.0 mil	0.178 mm
Adhesion to Steel	65 oz/in	7.11 N/cm
Tensile	21 lb/in	36.78 N/cm
Operating Temp	40 to 200 °F	4 to 93 °C
Colors	Silver, Black	
Std Sizes	48mm, 72mm x 55M	

## NASHUA 308

8 mil Utility Grade



BONDS TO SMOOTH OR ROUGH SURFACES  
CRISP, STRAIGHT TEAR BY HAND  
RESISTS TWISTING AND CURLING

GENERAL PURPOSE BUNDLING,  
PACKAGING, SEAMING, AND REPAIRS.  
PLUMBING USES.

Material	PE Coated Cloth / Natural Rubber	
Thickness	8.0 mil	0.203 mm
Adhesion to Steel	55 oz/in	6.02 N/cm
Tensile	22 lb/in	38.53 N/cm
Operating Temp	40 to 200 °F	4 to 93 °C
Colors	Silver, Black	
Std Sizes	48mm, 72mm x 55M	

## NASHUA 2280

9 mil Multi-Purpose Grade



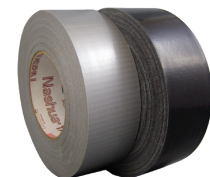
STRONG ADHESION TO ROUGH SURFACES  
EXCELLENT TENSILE STRENGTH AND TEAR  
GOOD SHEAR STRENGTH

HANG AND SEAM POLY SHEETING.  
BUNDLING, SEALING, AND REPAIRS. COLOR  
CODING. PLUMBING AND MAINTENANCE.

Material	PE Coated Cloth / Natural Rubber	
Thickness	9.0 mil	0.229 mm
Adhesion to Steel	70 oz/in	7.66 N/cm
Tensile	24 lb/in	42.03 N/cm
Operating Temp	40 to 200 °F	4 to 93 °C
Colors	Black, Blue, Brown, Burgundy, OD Green, Red, Silver, Tan, Yellow, White	
Std Sizes	48mm, 72mm x 55M	

## NASHUA 300

10 mil Multi-Purpose Grade



GOOD ADHESION AND SHEAR STRENGTH  
EXCELLENT CONFORMABILITY  
BONDS TO ROUGH OR SMOOTH SURFACES

HANG, SEAM, AND PATCH POLY SHEETING  
BUNDLE, PACKAGE, AND SEAL. GENERAL  
REPAIRS. PLUMBING AND MAINTENANCE.

Material	PE Coated Cloth / Natural Rubber	
Thickness	10.0 mil	0.254 mm
Adhesion to Steel	75 oz/in	8.21 N/cm
Tensile	24 lb/in	42.03 N/cm
Operating Temp	40 to 200 °F	4 to 93 °C
Colors	Silver, Black	
Std Sizes	48mm, 72mm x 55M	





**NASHUA 396**  
10 mil Multi-Purpose Grade



**GOOD ADHESION AND SHEAR STRENGTH  
EXCELLENT CONFORMABILITY  
BONDS TO ROUGH OR SMOOTH SURFACES**  
HANG, SEAM, AND PATCH POLY SHEETING.  
BUNDLE, PACKAGE, AND SEAL. GENERAL  
REPAIRS. PLUMBING AND MAINTENANCE.

Material	PE Coated Cloth / Natural Rubber	
Thickness	10.0 mil	0.254 mm
Adhesion to Steel	75 oz/in	8.21 N/cm
Tensile	24 lb/in	42.03 N/cm
Operating Temp	40 to 200 °F	4 to 93 °C
Colors	Silver	
Std Sizes	48mm, 72 mm x 55M	

**NASHUA 365**  
11 mil Professional Grade



**EXCELLENT STRENGTH AND TEAR  
AGGRESSIVE ADHESION TO SURFACES  
RESISTS TWISTING AND CURLING**  
SEALING HVAC DUCT JOINTS AND SEAMS.  
PATCH, SEAL, AND REPAIR INSULATION  
MATERIALS. PATCH AND REPAIR ON  
METALLIC FINISHES.

Material	Metalized PE Cloth / Natural Rubber	
Thickness	11.0 mil	0.279 mm
Adhesion to Steel	70 oz/in	7.66 N/cm
Tensile	23 lb/in	40.28 N/cm
Operating Temp	40 to 200 °F	4 to 93 °C
Colors	Metallic	
Std Sizes	48 mm, 72 mm x 55M	

**NASHUA 398**  
11 mil Professional Grade



**AGGRESSIVE BOND TO SURFACES  
EXCELLENT TENSILE STRENGTH AND TEAR  
HIGH SHEAR STRENGTH**  
HANG, SEAM, AND PATCH POLY SHEETING.  
HEAVY-DUTY BUNDLING, PATCHING,  
SEALING, AND REPAIRS. MAINTENANCE  
USES AND COLOR CODING.

Material	PE Coated Cloth / Natural Rubber	
Thickness	11.0 mil	0.279 mm
Adhesion to Steel	80 oz/in	8.75 N/cm
Tensile	24 lb/in	42.03 N/cm
Operating Temp	40 to 200 °F	4 to 93 °C
Colors	Black, Blue, Brown, Green, OD, Red, Silver, White, Yellow, Prt Silver	
Std Sizes	48 mm, 72 mm x 55M	

**NASHUA 345**  
12 mil Premium Grade



**EXCELLENT TENSILE AND TEAR  
HIGH ADHESION AND SHEAR STRENGTH  
EXCELLENT MOISTURE RESISTANCE**  
PREMIUM MOISTURE-RESISTANT DUCT  
TAPE FOR SEAMING, REPAIRING, AND  
PATCHING. HVAC AND ABATEMENT USES.

Material	PE Coated Cloth / Natural Rubber	
Thickness	12.0 mil	0.305 mm
Adhesion to Steel	70 oz/in	7.66 N/cm
Tensile	24 lb/in	42.03 N/cm
Operating Temp	40 to 200 °F	4 to 93 °C
Colors	Silver, Black	
Std Sizes	48mm, 72 mm x 55M	

**NASHUA 357**  
13 mil Premium Grade



**EXCEPTIONAL TACK AND HOLDING POWER  
PUNCTURE AND ABRASION RESISTANT  
EXCELLENT MOISTURE RESISTANCE**  
CHALLENGING BUNDLE, PATCH, SEAL, AND  
REPAIR USES. SURFACE PROTECTION FOR  
MEDIA BLAST. HANG & SEAL PE SHEETING.

Material	PE Coated Cloth / Natural Rubber	
Thickness	13.0 mil	0.330 mm
Adhesion to Steel	95 oz/in	10.39 N/cm
Tensile	50 lb/in	87.56 N/cm
Operating Temp	40 to 200 °F	4 to 93 °C
Colors	Silver, Black, Olive Drab, Red, White, Printed Silver	
Std Sizes	48 mm, 72 mm x 55M	

**Nashua 510**  
11.5 mil Premium Gaffer

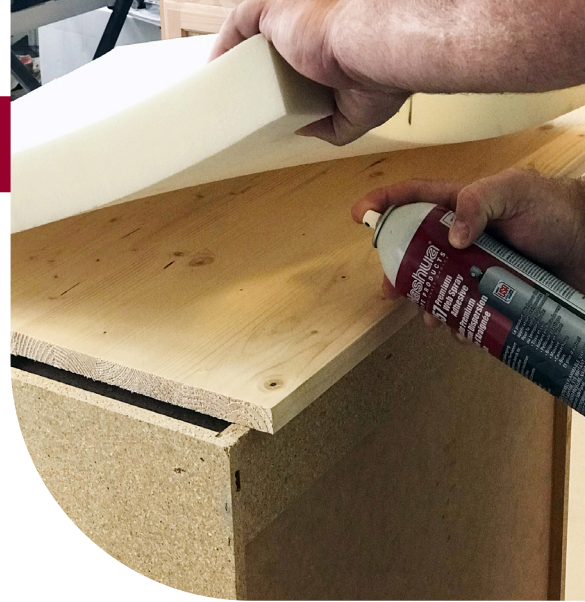


**DURABLE, MATTE-FINISH BACKING  
HIGH TACK AND LONG-TERM ADHESION  
CLEAN REMOVAL FROM MOST SURFACES**  
INDOOR/OUTDOOR WIRE HOLD DOWN  
FOR JOB SITES. COLOR CODING. FLOOR  
MARKING FOR SAFE DISTANCING AND  
HAZARD MARKING. WIRE BUNDLING.

Material	Matte Coated Cloth / Natural Rubber	
Thickness	11.5 mil	0.292 mm
Adhesion to Steel	50 oz/in	5.47 N/cm
Tensile	42 lb/in	73.55 N/cm
Operating Temp	40 to 200 °F	4 to 93 °C
Colors	Black	
Std Sizes	48 mm, 72 mm x 50M	

# Spray Adhesives & Primers

Leveraging Berry's expertise in natural rubber adhesive formulation, Nashua offers a premium web/lace spray adhesive which can be used in manufacturing and fabrication, insulation, mounting, bonding, and laminating applications. With exceptional strength and holding power, Nashua spray adhesive offers both permanent and temporary bonding capability to suit your application.



## NASHUA 398SA Multi-Purpose Web Spray Adhesive



LOW VOC - MEETS SCAQMD STANDARDS  
PERMANENT OR TEMPORARY BONDS  
GOOD SHEAR STRENGTH

GENERAL PURPOSE BONDING FOR FOILS, FABRICS, LEATHER, RUBBER, WOOD, AND PLASTICS. SECURE INSULATION MATERIALS. PRIME SURFACES.

Base Adhesive	Rubber	
Colors	Water White	
VOC Content	< 40% by Weight	
% Solids	23% Resins	
Operating Temp	-10 to 110 °F	-23 to 43 °C
Std Sizes	17 FL OZ (12 oz Net Wt)	

## NASHUA 357SA Premium Web Spray Adhesive



LOW VOC - MEETS SCAQMD STANDARDS  
RESISTS UV, MOISTURE, AND OXIDATION  
EXCELLENT SHEAR STRENGTH

HEAVY-DUTY PERMANENT OR TEMPORARY BONDS FOR FOILS, METALS, FABRICS, LEATHER, RUBBER, WOOD, AND PLASTICS. SECURE INSULATION MATERIALS. PRIME SURFACES.

Base Adhesive	Rubber	
Colors	Water White	
VOC Content	< 40% by Weight	
% Solids	24% Premium Resins	
Operating Temp	-10 to 180 °F	-23 to 88 °C
Std Sizes	20 FL OZ (14 oz Net Wt)	

## POLYKEN 1027 Premium Butyl Brush-on Primer



EASY TO APPLY - BRUSH ON  
PROVIDES INSTANT-TACK SURFACE  
MEETS LOCAL AND NATIONAL STANDARDS

PRIMER FOR PIPE SURFACES IN CORROSION PROTECTION USES. PRIME SURFACES PRIOR TO TAPE INSTALLATION ON OSB, BRICK, GYPSUM BOARD, OR CONCRETE.

Base Adhesive	Butyl Rubber / Resins	
Colors	Black	
VOC Content	0.59 kg/L	
% Solids	30% Premium Resins	
Operating Temp	20 to 200 °F	-7 to 93 °C
Std Sizes	1 quart (0.95 L), 1 gallon (3.79 L)	

**Did you know...?** LEED® (Leadership in Energy and Environmental Design) was developed by the United States Green Building Council in 1998 as a rating system for “green” buildings. Buildings can be certified “LEED”, “LEED Silver”, “LEED Gold” or “LEED Platinum”. The certification is based on points accumulated across six major categories: Sustainable Sites, Energy and Atmosphere, Materials and Resources, Indoor Environmental Quality, Water Efficiency, and Innovation. Each of these factors has many sub categories.

Under the Indoor Environmental Quality (IEQ) standard, using products with low VOC (Volatile Organic Compounds) content can help contribute towards the overall energy efficiency of the building. Berry Global proudly offers products with low VOC content including duct tapes (<1 g/L), foil tapes (<30 g/L), and spray adhesives (<40% by weight) that can help contribute to earning IEQ points for LEED projects. For more information, contact your Nashua sales representative or our customer care team today!



# Electrical & Plumbing Tapes

Utilizing our expertise in butyl rubber and natural rubber adhesive technology and applying it to applications where water resistance and dielectric strength are a must, we offer a selection of tapes for common plumbing, sealing, and electrical applications.



## POLYKEN 777 General Purpose PVC Electrical



UL 510 CLASSIFIED  
CONFORMABLE AND STRETCHY  
EXCELLENT LONG-TERM ADHESION

WRAPPING AND SPLICING ELECTRICAL CONNECTIONS. BUNDLING ELECTRICAL WIRES AND CORDS. UP TO 600V PER WRAP.

Material	PVC Film / Rubber	
Thickness	7.0 mil	0.178 mm
Adhesion to Steel	20 oz/in	2.19 N/cm
Tensile	18 lb/in	31.52 N/cm
Operating Temp	40 to 180 °F	40 to 82 °C
Colors	Black	
Std Sizes	3/4in x 60Ft	

## POLYKEN B17 General Purpose PVC Electrical

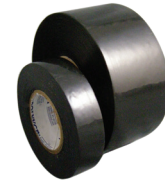


UL 510 CLASSIFIED  
CONFORMABLE AND STRETCHY  
EXCELLENT LONG-TERM ADHESION

WRAPPING AND SPLICING ELECTRICAL CONNECTIONS. BUNDLING WIRES AND CORDS. 9500V DIELECTRIC STRENGTH.

Material	PVC Film / Rubber	
Thickness	7.0 mil	0.178 mm
Adhesion to Steel	25 oz/in	2.74 N/cm
Tensile	20 lb/in	35.03 N/cm
Operating Temp	40 to 180 °F	4 to 82 °C
Colors	Blue, Green, Red, White, Yellow	
Std Sizes	3/4in x 66Ft	

## POLYKEN 823 Premium PE Electrical



EXTREME WEATHER PERFORMANCE  
11500V DIELECTRIC STRENGTH  
RESISTS SOLVENTS AND MOISTURE

UL 510 CLASSIFIED. ELECTRICAL WRAPPING, SPLICING, AND BUNDLING WHEN PVC TAPES ARE NOT PERMITTED.

Material	PE Film / Natural Rubber	
Thickness	9.5 mil	0.241 mm
Adhesion to Steel	31 oz/in	3.39 N/cm
Tensile	17 lb/in	29.77 N/cm
Operating Temp	-40 to 180 °F	-40 to 82 °C
Colors	Black	
Std Sizes	48mm x 33M	

## POLYKEN 826 Premium PE/Butyl Pipe Wrap



AGGRESSIVE PERMANENT BUTYL ADHESIVE  
MOISTURE AND ABRASION RESISTANT  
PERFORMS OVER WIDE TEMP RANGE

INTERIOR/EXTERIOR/IN-GROUND  
CORROSION PROTECTION OF SMALL  
DIAMETER PIPE. USE WITH 1027 PRIMER.

Material	PE Film / Butyl Rubber	
Thickness	12.0 mil	0.305 mm
Adhesion to Steel	40 oz/in	4.38 N/cm
Tensile	25 lb/in	43.78 N/cm
Operating Temp	-30 to 140 °F	-34 to 60 °C
Colors	Black, Yellow	
Std Sizes	48mm x 31 M; 4in, 6in x 100Ft	

## POLYKEN 711 Utility PVC Pipe Wrap



TOUGH, DURABLE, CONFORMABLE  
EXCELLENT BOND TO SURFACES  
MOISTURE AND SOLVENT RESISTANT

PROTECT PIPES AND JOINTS FROM  
CORROSION. INDUSTRIAL ASSEMBLY.  
MEETS UPC, ANSI, IAPMO STANDARDS.

Material	PVC Film / Butyl Rubber	
Thickness	12.0 mil	0.305 mm
Adhesion to Steel	15 oz/in	1.64 N/cm
Tensile	20 lb/in	35.03 N/cm
Operating Temp	0 to 200 °F	-18 to 93 °C
Colors	Printed Black	
Std Sizes	48mm x 31 M	

## POLYKEN 509W/510W/513W PTFE Thread Seal



EXTREME TEMPERATURE PERFORMANCE  
EASY TO INSTALL  
HELPS PREVENT LEAKS

SELF-LUBRICATES JOINTS AND PIPE ENDS  
MAKING THEM EASY TO ASSEMBLE AND  
DISASSEMBLE FOR A LEAK-PROOF SEAL.

Material	PTFE Film	
Thickness	3.5 mil	0.089 mm
Pressure Rating	<10,000 psi	
Operating Temp	-450 to 500 °F	-268 to 260 °C
Colors	White	
Std Sizes	0.5in, 0.75in x 260in or 520in	

# Construction Tapes

With materials engineered for high performance in demanding construction applications, Berry Global has been protecting residential, commercial, and multi-family investments for more than fifty years.



## 626-20 Foilastic® Window & Door Flashing



INDEFINITE OUTDOOR UV EXPOSURE  
REMAINS PLIABLE IN HIGH OR LOW TEMPS  
COMPATIBLE WITH SEALANTS/CAULKING

FLASHING AROUND WINDOW AND  
DOOR INSTALLATIONS, CORNER-BOARD  
ABUTMENTS, SIDEWALL SHEATHING  
SEAMS, DECK-TO-WALL JOINTS, AND  
OTHER PENETRATION AREAS.

Material	Prt Foil / Butyl Rubber / Kraft	
Thickness (w/o Lnr)	20.0 mil	0.508 mm
Adhesion to Steel	279 oz/in	30.52 N/cm
Tensile	18 lb/in	31.52 N/cm
Install Temp	30 to 180 °F	-1 to 82 °C
Operating Temp	-30 to 200 °F	-34 to 93 °C
Std Sizes	4in, 6in x 100Ft	

## 627-20 Shadowlastic® Plus Window & Door Flashing



UP TO 3 YEAR OUTDOOR UV EXPOSURE  
REMAINS PLIABLE IN HIGH OR LOW TEMPS  
COMPATIBLE WITH SEALANTS/CAULKING  
AAMA VCL LISTED (AAMA 711-13)

FLASHING AROUND WINDOW AND  
DOOR INSTALLATIONS, CORNER-BOARD  
ABUTMENTS, SIDEWALL SHEATHING  
SEAMS, DECK-TO-WALL JOINTS, AND  
OTHER PENETRATION AREAS.

Material	Prt Woven PE / Butyl Rubber / Kraft	
Thickness	20.0 mil	0.508 mm
Adhesion to Steel	219 oz/in	23.96 N/cm
Tensile	59 lb/in	103.33 N/cm
Install Temp	30 to 180 °F	-1 to 82 °C
Operating Temp	-30 to 200 °F	-34 to 93 °C
Std Sizes	4in, 6in, 9in x 100Ft	

## 630-14 Shadowlastic Extreme Window & Door Flashing



UP TO 3 YEAR OUTDOOR UV EXPOSURE  
EXCELLENT COLD TEMP ADHESION  
COMPATIBLE WITH SEALANTS/CAULKING  
AAMA VCL LISTED (AAMA 711-13)

FLASHING AROUND WINDOW AND  
DOOR INSTALLATIONS, CORNER-BOARD  
ABUTMENTS, SIDEWALL SHEATHING  
SEAMS, DECK-TO-WALL JOINTS, AND  
OTHER PENETRATION AREAS.

Material	Prt Woven PE / Butyl Rubber / Kraft	
Thickness	14.5 mil	0.368 mm
Adhesion to Steel	63 oz/in	6.89 N/cm
Tensile	59 lb/in	103.33 N/cm
Install Temp	10 to 180 °F	-12 to 82 °C
Operating Temp	-30 to 200 °F	-34 to 93 °C
Std Sizes	4in, 6in, 9in x 75Ft	

## 626-35 Foilastic Roof & Commercial Flashing



INDEFINITE OUTDOOR UV EXPOSURE  
REMAINS PLIABLE IN HIGH OR LOW TEMPS  
COMPATIBLE WITH SEALANTS/CAULKING  
AAMA VCL LISTED (AAMA 711-13)

FLASHING ROOF RIDGE AND HIP LINES,  
COMMERCIAL WINDOW AND DOOR  
INSTALLATIONS, SKYLIGHTS, DORMERS,  
AND OTHER PENETRATION AREAS.

Material	Foil / Butyl Rubber / LDPE	
Thickness (w/o Lnr)	35.0 mil	0.889 mm
Adhesion to Steel	264 oz/in	28.88 N/cm
Tensile	20 lb/in	35.03 N/cm
Install Temp	30 to 180 °F	-1 to 82 °C
Operating Temp	-30 to 200 °F	-34 to 93 °C
Std Sizes	48mm x 15M; 3in, 4in, 6in, 9in, 12in x 50Ft	

## 627-35 Shadowlastic Plus Roof & Commercial Flashing



UP TO 3 YEAR OUTDOOR UV EXPOSURE  
REMAINS PLIABLE IN HIGH OR LOW TEMPS  
COMPATIBLE WITH SEALANTS/CAULKING  
AAMA VCL LISTED (AAMA 711-13)

FLASHING ROOF RIDGE AND HIP LINES,  
COMMERCIAL WINDOW AND DOOR  
INSTALLATIONS, SKYLIGHTS, DORMERS,  
AND OTHER PENETRATION AREAS.

Material	Prt Woven PE / Butyl Rubber / Kraft	
Thickness	35.0 mil	0.889 mm
Adhesion to Steel	229 oz/in	25.05 N/cm
Tensile	59 lb/in	103.33 N/cm
Install Temp	30 to 180 °F	-1 to 82 °C
Operating Temp	-30 to 200 °F	-34 to 93 °C
Std Sizes	6in, 9in, 12in x 50Ft	

## POLYKEN 629 Seam & Seal® Housewrap Tape



UV-RESISTANT FOR OUTDOOR USE  
TOUGH, DURABLE, HAND-TEARABLE  
SECURE BOND TO HOUSEWRAP

SEAL, SEAM, PATCH, AND REPAIR  
HOUSEWRAP AND INTERIOR/EXTERIOR  
VAPOR BARRIER MATERIALS. SEAL  
EXTERIOR WALL SHEATHING JOINTS AND  
EXTRUDED FOAM PRODUCTS.

Material	BOPP Film / Solvent Acrylic	
Thickness	3.2 mil	0.081 mm
Adhesion to Steel	50 oz/in	5.47 N/cm
Tensile	32 lb/in	56.04 N/cm
Install Temp	-5 to 180 °F	-20 to 82 °C
Operating Temp	-40 to 212 °F	-40 to 100 °C
Colors	White, Red, Clear	
Std Sizes	48mm, 72mm x 50M	

# Carton Sealing, Filament, & Masking Tapes

Berry Global also offers packaging products and masking tapes for in-house applications at your branches and distribution centers. Available in stock to add to your next HVAC Tapes order!

BACKING      ADHESIVE      THICKNESS      APPLICATIONS      COLORS/SIZES

## POLYKEN 803 & 813M Carton Sealing Tapes



OPP Film

Synthetic Rubber

1.6 mil & 1.9 mil

SEALING OF LIGHTWEIGHT BOXES SUBJECT TO NORMAL SHIPPING HAZARDS. IDEAL FOR HAND APPLICATION.

Clear  
48 mm x 50 M  
48 mm x 100 M

## POLYKEN 704 Multi-Purpose Filament Tape



Filament Reinforced OPP Film

Synthetic Rubber

4.5 mil

110 LB/IN TENSILE STRENGTH LIGHT-DUTY STRAPPING, UNITIZING, AND PACKAGING APPLICATIONS. SECURES GOODS FOR TRANSPORT.

Clear  
12 mm x 55 M  
18 mm x 55 M  
24 mm x 55 M

## BERRY HWX Hand-Applied Stretch Wrap



Blown LLDPE Film

N/A

65 ga or 79 ga

ALL-PURPOSE HAND WRAP FOR PALLETIZING, UNITIZING, AND PROTECTING DURING STORAGE OR TRANSPORT. MANUAL WAREHOUSE APPLICATIONS.

Clear  
(65 ga) 16 in x 1500 Ft  
(79 ga) 16 in x 1500 Ft  
(79 ga) 18 in x 1500 Ft

## NASHUA MT100 Utility Grade Masking Tape



Crepe Paper

Synthetic Rubber

4.8 mil

GENERAL HOUSEHOLD AND OFFICE MASKING USES. BUNDLING, LABELING, AND PACKAGING. OFFERS UP TO 24 HOURS CLEAN REMOVAL.

Natural  
18 mm x 55 M  
24 mm x 55 M  
36 mm x 55 M  
48 mm x 55 M

## NASHUA MT300 Multi-Purpose Grade Masking Tape



Crepe Paper

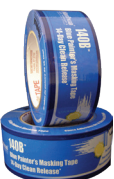
Synthetic Rubber

6.0 mil

INDOOR/OUTDOOR HOUSEHOLD AND NON-CRITICAL PAINT MASKING, BUNDLING, LABELING, AND PACKAGING. OFFERS UP TO 1-3 DAYS CLEAN REMOVAL.

Natural  
36 mm x 55 M  
48 mm x 55 M  
72 mm x 55 M

## NASHUA 140B 14-Day Blue Painter's Masking Tape



Crepe Paper

Synthetic Rubber

5.3 mil

INDOOR/OUTDOOR PAINT MASKING. SURFACE PROTECTION. SECURING PE SHEETING FOR PROFESSIONAL PAINTING & CLEANING. UP TO 14 DAYS CLEAN REMOVAL.

Blue  
24 mm x 55 M  
36 mm x 55 M  
48 mm x 55 M



# HVAC Application Guide

## FIBERGLASS DUCT BOARD UL 181A-P B-FX

Nashua Recommends

Page

For use in seaming and sealing joints and connections on fiberglass duct board - applications requiring a UL 181A-P Listed tape.



Nashua 324A

2, 4

## FLEXIBLE DUCT UL 181B-FX

For use in seaming and sealing joints and connections of class 1 flexible ducts - applications requiring a UL 181B-FX Listed tape.



Nashua 324A

2, 4

Nashua 557

2, 8

Nashua 558CA

2, 8

555 FlexFix®

2, 6

Nashua 367-17

2, 5

## RIGID SHEET METAL DUCT

For use in seaming and sealing joints and connections on rigid round pipe ducts as well as sealing slips and drives.



Nashua 367-17

2, 5

Nashua 324A

2, 4

Nashua 327

5

Nashua 322

4

Nashua 330X

4

## DUCT WRAP/FIBERGLASS INSULATION

For use in attaching, seaming, sealing, and patching foil, FSK, and ASJ faced insulation materials.



Nashua FSK

6

Nashua ASJ

6

Nashua 438 FSK

6

Nashua 322

4

Nashua 324A

2, 4

Nashua 330X

4

## BUBBLEWRAP/REFLECTIVE INSULATION

For use in attaching, seaming, sealing, and patching reflective insulation and bubble insulation materials. Can also be used to secure and seam foam insulation.



555 FlexFix®

2, 6

## LINE SETS

Seam, secure, patch, and protect insulation materials for outdoor line sets.



444

7

# Index

140B	Premium 14-Day Painter's Masking Tape	13	557	14 mil UL 181B-FX Duct Tape	2, 8
230X	Utility Extreme Weather Foil Tape	4	558CA	14 mil CEC, UL 181B-FX Duct Tape	2, 8
300	10 mil Multi-Purpose Duct Tape	8	626-20	Foilastic Window & Door Flashing Tape	12
307	7 mil Utility Duct Tape	8	626-35	Foilastic Roof Flashing Tape	12
308	8 mil Utility Duct Tape	8	627-20	Shadowlastic Plus Window Flashing	12
314CRT	Foil-Laminate Cooler Repair Tape	7	627-35	Shadowlastic Plus Roof Flashing Tape	12
322	Multi-Purpose Foil Tape	4	629	Seam & Seal Housewrap Tape	12
324A	Premium Cold Weather UL Foil Tape	2, 4	630-14	Shadowlastic Extreme Window Flashing	12
327	Butyl Mastic Sealant Tape	5	704	Multi-Purpose Filament Tape	13
330X	Premium Extreme Weather Foil Tape	4	711	Utility PVC Pipewrap Tape	11
335FT	High Temperature Foil	4	777	7 mil GP Electrical Tape - Black	11
345	12 mil Premium Grade Duct Tape	9	803	1.6 mil Utility Carton Sealing Tape	13
357	13 mil Premium Grade Duct Tape	9	813M	1.9 mil Multi-Purpose Carton Sealing Tape	13
357SA	Premium Web Spray Adhesive	10	822	Embossed PVC Insulation Jacketing Tape	6
358WMP	ASJ-WMP Insulation Jacketing	6	823	Premium PE Electrical Tape	11
365	11 mil Professional Duct Tape - Metallic	9	826	Premium Butyl Pipewrap Tape	11
367-17	Foilmastic UL 181B-FX Sealant Tape	2, 5	2280	9 mil Multi-Purpose Duct Tape	8
396	10 mil Abatement Duct Tape	9	1027	Premium Butyl Brush-on Primer	10
398	11 mil Professional Grade Duct Tape	9	ASJ	ASJ Insulation Jacketing Tape	6
398SA	Multi-Purpose Web Spray Adhesive	10	B17	7 mil GP PVC Electrical Tape - Colors	11
438	Extreme Weather FSK Insulation Tape	6	FSK	FSK Insulation Jacketing Tape	6
444	Line Set Tape	7	HWX	Hand Applied Stretch Wrap	13
509/510/513W	PTFE Thread Seal Tape	11	MT100	Utility Paper Masking Tape	13
510	11.5 mil Premium Gaffer Tape	9	MT300	Multi-Purpose Paper Masking Tape	13
555	Flexfix UL 181B-FX OPP Film Tape	2, 6			

## Shelf Life & Storage

- Typical shelf life for duct and foil tapes is three (3) years from date of manufacture. For specific shelf life on these and other products, please contact customer service or your sales representative.
- Products should be stored in the original dry carton, off of the floor in a well-ventilated area with temperatures from 60 - 80 °F at 40-60% relative humidity.





## Professionals' Choice

For generations of contractors, **Nashua Tape Products®** has been the dependable, trusted choice for sealing and insulating heating, ventilating, and air conditioning systems in residential and commercial construction.

The power of **Nashua** tapes is in the unique combination of quality, value, and proven performance. Nashua's selection of low VOC HVAC tapes gets the job done right the first time, every time.



NASHUA TAPES ARE LOW VOC AND  
CAN CONTRIBUTE TO LEED® CREDITS  
CONTACT CUSTOMER SERVICE FOR DETAILS



Nashua Tape Products®, Foilastic®, Foilmastic®, FlexFix®, and Shadowlastic® are trademarks of Berry Global, Inc. or one of its affiliates.